

The following page(s) are extracted from multi-page Kuhnke product catalogues or CDRoms and any page number shown is relevant to the original document. The PDF sheets here may have been combined to provide technical information about the specific product(s) you have selected.

Hard copy product catalogues, and CDRoms have been published describing Kuhnke Pneumatics, Solenoids, Relays and Electronics; some divided into different books. A list of current publications is available on this web site or from our sales offices. Some may be available for download, but as substantially larger files.

Contact Details

Kuhnke sales and service in the UK

H. Kuhnke Ltd
Unit 21 Abbey Enterprise Center
Premier Way
Romsey
SO51 9AQ

T: 01794 514445

F: 01794 513514

Email: sales@kuhnke.co.uk

Important Note

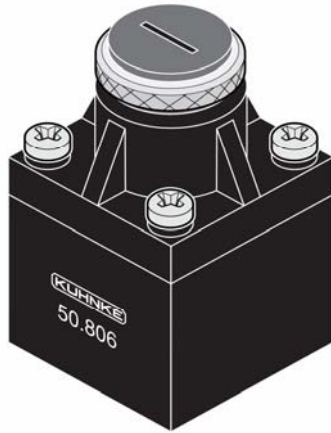
The information shown in these documents is for guidance only. No liability is accepted for any errors or omissions. The designer or user is solely responsible for the safe and proper application of the parts, assemblies or equipment described.

Regulators

Series 50 Manifold Regulator

Kuhnke System Logic Devices

Manifold Mounted Miniature Pressure Regulator



The manifold mounted regulator was designed for use on custom manifolds. The miniature regulator is available in both relieving and non-relieving versions in a molded housing.

The unit is screw driver adjustable and is equipped with a locking ring to prevent tampering after the setting is made.

Several adjustment ranges are available for close regulation in most applications. Special designs are available.



Technical Specifications

Op. Pressure:

0-10 bar

Regulator Range:

0-5 bar

Porting:

Manifold mounted.

Flow Rate:

Dependent on regulator model.
See charts.

Media:

Filtered air.

Types:

Relieving or non-relieving.
Single stage, diaphragm/
spring construction.

Response Time:

(Dependent on secondary volume).
Response average: 45ms at 20%
loss of secondary air pressure;
100ms at 50% loss of secondary
air pressure.

Adjustment:

Screw driver Adj. Equipped with
locking nut to prevent tampering
after setting is
made.

Materials:

Molded POM housing,
stainless and brass interior parts,
Buna N seals.

Operating Ambient:

0° C to +60° C

Dimensions:

Height – 42mm
Width – 30mm Square
Weight – 6 gr..

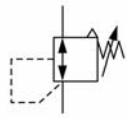
Drilling Plan:

See drawing.

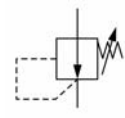
Selection Chart

Secondary Pressure Regulation Range	Catalogue Number	
	Relieving Type	Non- Relieving Type
5 Bar	50806-00-50-00	50806-00-50-10
2.5 Bar	50806-00-25-00	50806-00-25-10

Diagrams



Relieving

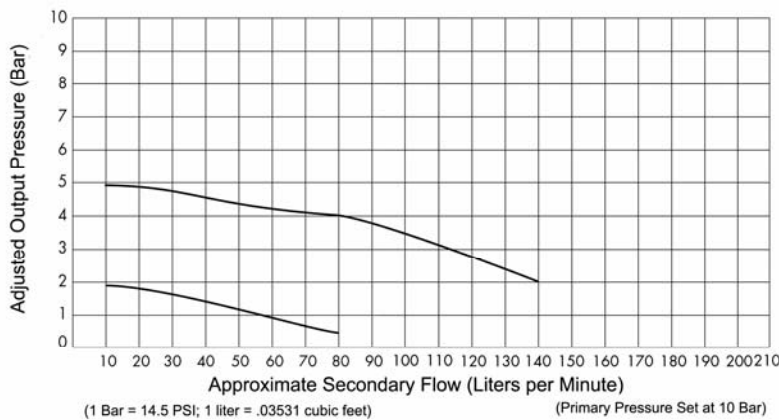


Non- Relieving

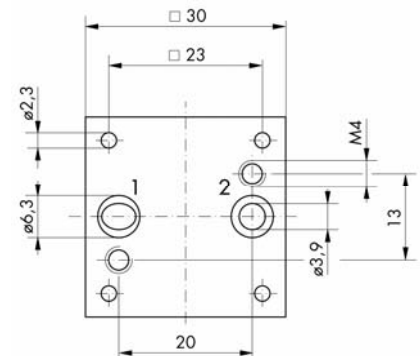
Operation

Relieving type regulators allow excessive pressure on the secondary side of the regulator to bleed off to the atmosphere, helping maintain steady pressure. Non-relieving types are used where pressure build up is not a concern as in air motors, or air gun applications etc.

Flow Chart



Drilling Plan



Regulator Bottom View
(Dimensions in millimeters)